

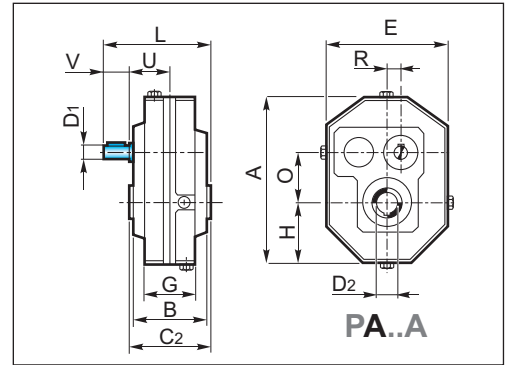


4.7 Dimensioni

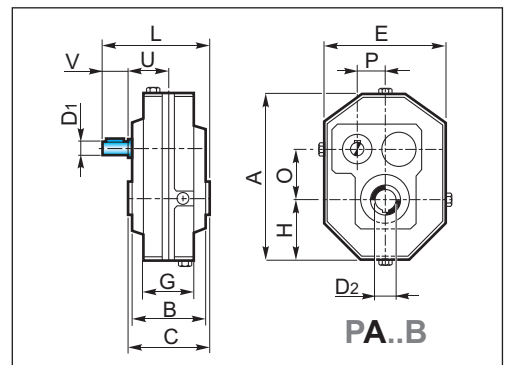
4.7 Dimensions

4.7 Abmessungen

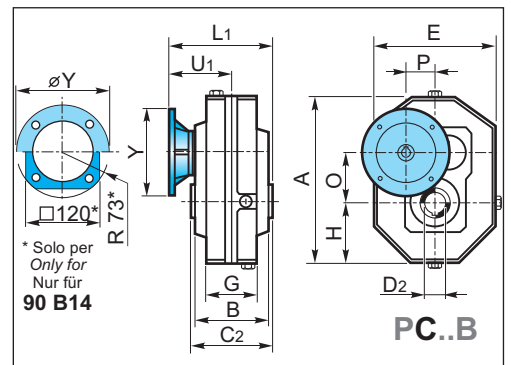
PA...A - PA...B - PC...B													
	63			80			100			125		160	
A	194			266			331			405		510	
B	97			120			143			164		196	
C2	101			130			155			180		220	
D2 _{H7}	25	28	30	30	35	38	40	45	50	55	60	65	70
E	140			196			242			293		367	
G	68			82			100			118		146	
H	70			98			121			146.5		183.5	
O	61.5			79.5			99.5			123.5		157	
P	30.3			43.9			59.6			72.4		85.1	
R	17.7			20.1			22.4			29.6		41.9	



PA...A					
D1 _{h6}	19	24	28	38	48
V	40	50	60	80	80
L	157	194	229	281	342
U	66	79	91	111	152
kg	10	16	28	52	108
PA...B					
D1 _{h6}	14	19	24	28	38
V	30	40	50	60	80
L	138	171	206	241	301.5
U	57.5	66	78.5	91	111.5
kg	12	18	34	58	120



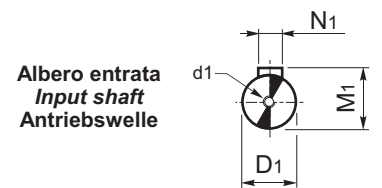
PC...B								
	63				80			
IEC	63 B5	71 B5	80/90 B5	80 B14	71 B5	80/90 B5	*90 B14	100/112 B5
Y	140	160	200	120	160	200	□120 / R 73	250
L1	141	148	168	168	173	193	193	203
U1	90.5	97.5	117.5	117.5	108	128	128	138



* Flange quadrate / Square flanges / Viereckige Flansche

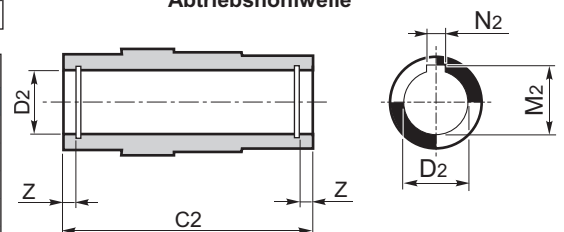
PC...B											
	100			125				160			
IEC	80/90 B5	100/112 B5	132 B5	80/90 B5	100/112 B5	132 B5	160/180 B5	100/112 B5	132 B5	160/180 B5	200 B5
Y	200	250	300	200	250	300	350	250	300	350	400
L1	221	231	253	244	254	276	306	298	348	348	348
U1	143.5	153.5	175.5	154	164	186	216	188	238	238	238

PA...A					
	63	80	100	125	160
D1 _{h6}	19	24	28	38	48
d1	M8	M8	M8	M10	M12
M1	21.5	27	31	41	51.5
N1	6	8	8	10	14
PA...B					
D1 _{h6}	14	19	24	28	38
d1	M6	M8	M8	M8	M10
M1	16	21.5	27	31	41
N1	5	6	8	8	10



Albero entrata
Input shaft
Antriebswelle

PA...A - PA...B - PC...B													
	63			80			100			125		160	
C2	101			130			155			180		220	
D2 _{H7}	25	28	30	30	35	38	40	45	50	55	60	65	70
M2	28.3	31.3	33.3	33.3	38.3	41.3	43.3	48.8	54.3	59.3	64.4	69.4	79.4
N2	8	8	8	8	10	10	12	14	14	16	18	18	20
Z	7.3	7.3	7.3	8.5	8.5	8.5	10.8	10.8	12	12	15.5	15.5	15.5



Albero uscita cavo
Hollow output shaft
Antriebshohlwelle